

CHEONGJU/Cheongju INTL(RKTU)
RWY 06L
RNAV(GNSS) BUKIL 2

ELEV. ALT IN FEET
DIST IN NM
BRG ARE MAG
VAR 9°W

True North

NOTE

1. ATC surveillance service & GNSS required.
2. RNAV 1.0 Required.
3. DME/DME/IRU N/A.
4. At or below speed 220 kt IAS at BUKIL, TUTAE.
5. Minimum climb of 370 ft/NM to 6 000 ft.

DEPARTURE ROUTE DESCRIPTION

TAKE-OFF RWY 06L : Climb on course 060° to BUKIL, thence....

GUKDO TRANSITION : Then on track 007° to cross GUKDO at or above 6 000 ft.

OLMEN TRANSITION : Then on track 330° to cross TUTAE at 6 000 ft and on track 240° to cross OWING at 6 000 ft and on track 280° to cross OLMEN at or above 6 000 ft.

BULTI TRANSITION : Then on track 330° to cross TUTAE at 6 000 ft and on track 240° to cross OWING at 6 000 ft and on track 277° to cross BULTI at or above 6 000 ft.

NOT TO SCALE

AIP AMDT 6/25

CHEONGJU/Cheongju INTL(RKTU)

RWY 06L

RNAV BUKIL 2

AERONAUTICAL DATA TABULATION

Standard Instrument Departure Procedure Coding Tables

RNAV BUKIL 2 - GUKDO Transition

Serial Number	Path Descriptor	Waypoint Identifier	Fly-over	Course/Track °M(°T)	Distance (NM)	Turn direction	Altitude (ft)	Speed (kt)	Coordinates	VPA/TCH	Navigation specification	Remarks
001	CF	BUKIL	-	060(052.41)	8.0	-	-	-220	36° 48' 23.2" N 127° 38' 33.7" E	-	RNAV 1	CG 370 ft/NM to 6 000 ft
002	TF	GUKDO	-	007(359.35)	12.78	-	+6 000	-	37° 01' 10.9" N 127° 38' 22.9" E	-	RNAV 1	CG 370 ft/NM to 6 000 ft

RNAV BUKIL 2 - OLMEN Transition

Serial Number	Path Descriptor	Waypoint Identifier	Fly-over	Course/Track °M(°T)	Distance (NM)	Turn direction	Altitude (ft)	Speed (kt)	Coordinates	VPA/TCH	Navigation specification	Remarks
001	CF	BUKIL	-	060(052.41)	8.0	-	-	-220	36° 48' 23.2" N 127° 38' 33.7" E	-	RNAV 1	CG 370 ft/NM to 6 000 ft
002	TF	TUTAE	-	330(322.50)	8.0	-	@6 000	-220	36° 54' 44.4" N 127° 32' 29.4" E	-	RNAV 1	CG 370 ft/NM to 6 000 ft
003	TF	OWING	-	240(232.44)	18.0	-	@6 000	-	36° 43' 43.8" N 127° 14' 44.4" E	-	RNAV 1	-
004	TF	OLMEN	-	280(272.37)	12.29	-	+6 000	-	36° 44' 13.4" N 126° 59' 27.6" E	-	RNAV 1	-

RNAV BUKIL 2 - BULTI Transition

Serial Number	Path Descriptor	Waypoint Identifier	Fly-over	Course/Track °M(°T)	Distance (NM)	Turn direction	Altitude (ft)	Speed (kt)	Coordinates	VPA/TCH	Navigation specification	Remarks
001	CF	BUKIL	-	060(052.41)	8.0	-	-	-220	36° 48' 23.2" N 127° 38' 33.7" E	-	RNAV 1	CG 370 ft/NM to 6 000 ft
002	TF	TUTAE	-	330(322.50)	8.0	-	@6 000	-220	36° 54' 44.4" N 127° 32' 29.4" E	-	RNAV 1	CG 370 ft/NM to 6 000 ft
003	TF	OWING	-	240(232.44)	18.0	-	@6 000	-	36° 43' 43.8" N 127° 14' 44.4" E	-	RNAV 1	-
004	TF	BULTI	-	277(269.11)	20.3	-	+6 000	-	36° 43' 22.3" N 126° 49' 29.7" E	-	RNAV 1	-

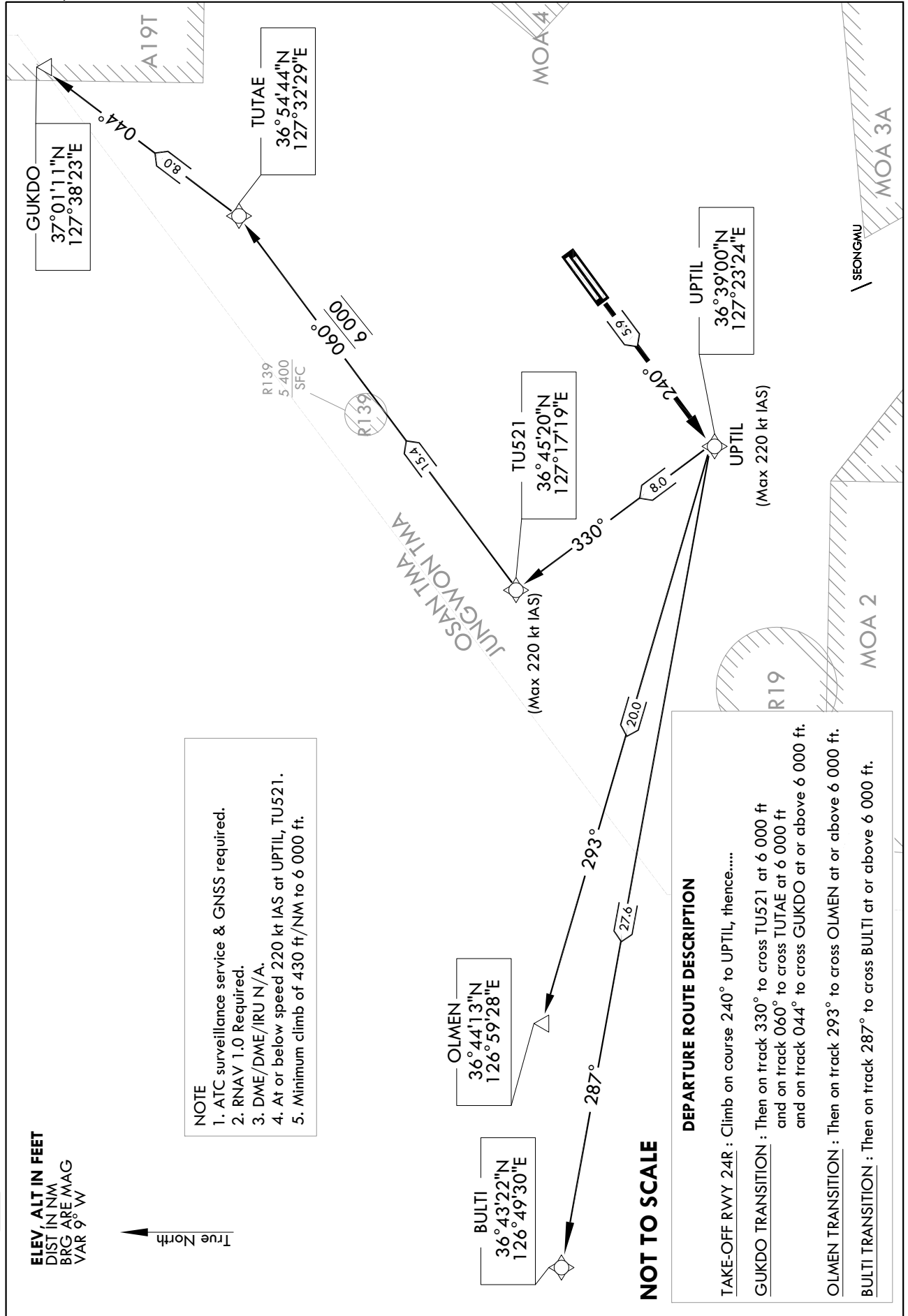
STANDARD DEPARTURE CHART
INSTRUMENT (SID) - ICAO

TRANSITION ALT 14 000
TRANSITION LVL FL 140

JUNGWON DEP 129.65
CHEONGJU TWR 118.7 126.2

CHEONGJU/Cheongju INTL(RKTU)
RWY 24R
RNAV(GNSS) UPTIL 1

Note : Departure under U.S. TERPS.



Change : Information of MAG VAR(8° W → 9° W).

CHEONGJU/Cheongju INTL(RKTU)

RWY 24R

RNAV UPTIL 1

AERONAUTICAL DATA TABULATION

Standard Instrument Departure Procedure Coding Tables

RNAV UPTIL 1 - GUKDO Transition

Serial Number	Path Descriptor	Waypoint Identifier	Fly-over	Course/Track °M(°T)	Distance (NM)	Turn direction	Altitude (ft)	Speed (kt)	Coordinates	VPA/ TCH	Navigation specification	Remarks
001	CF	UPTIL	-	240(232.4)	5.9	-	-	-220	36°38'59.7"N 127°23'23.8"E	-	RNAV 1	CG 430 ft/NM to 6 000 ft
002	TF	TU521	-	330(322.34)	8.0	-	@6 000	-220	36°45'19.8"N 127°17'19.1"E	-	RNAV 1	CG 430 ft/NM to 6 000 ft
003	TF	TUTAE	-	060(052.27)	15.38	-	@6 000	-	36°54'44.4"N 127°32'29.4"E	-	RNAV 1	-
004	TF	GUKDO	-	044(036.24)	7.98	-	+6 000	-	37°01'10.9"N 127°38'22.9"E	-	RNAV 1	-

RNAV UPTIL 1 - OLMEN Transition

Serial Number	Path Descriptor	Waypoint Identifier	Fly-over	Course/Track °M(°T)	Distance (NM)	Turn direction	Altitude (ft)	Speed (kt)	Coordinates	VPA/ TCH	Navigation specification	Remarks
001	CF	UPTIL	-	240(232.4)	5.9	-	-	-220	36°38'59.7"N 127°23'23.8"E	-	RNAV 1	CG 430 ft/NM to 6 000 ft
002	TF	OLMEN	-	293(285.29)	19.95	-	+6 000	-	36°44'13.4"N 126°59'27.6"E	-	RNAV 1	CG 430 ft/NM to 6 000 ft

RNAV UPTIL 1 - BULTI Transition

Serial Number	Path Descriptor	Waypoint Identifier	Fly-over	Course/Track °M(°T)	Distance (NM)	Turn direction	Altitude (ft)	Speed (kt)	Coordinates	VPA/ TCH	Navigation specification	Remarks
001	CF	UPTIL	-	240(232.4)	5.9	-	-	-220	36°38'59.7"N 127°23'23.8"E	-	RNAV 1	CG 430 ft/NM to 6 000 ft
002	TF	BULTI	-	287(279.28)	27.62	-	+6 000	-	36°43'22.3"N 126°49'29.7"E	-	RNAV 1	CG 430 ft/NM to 6 000 ft

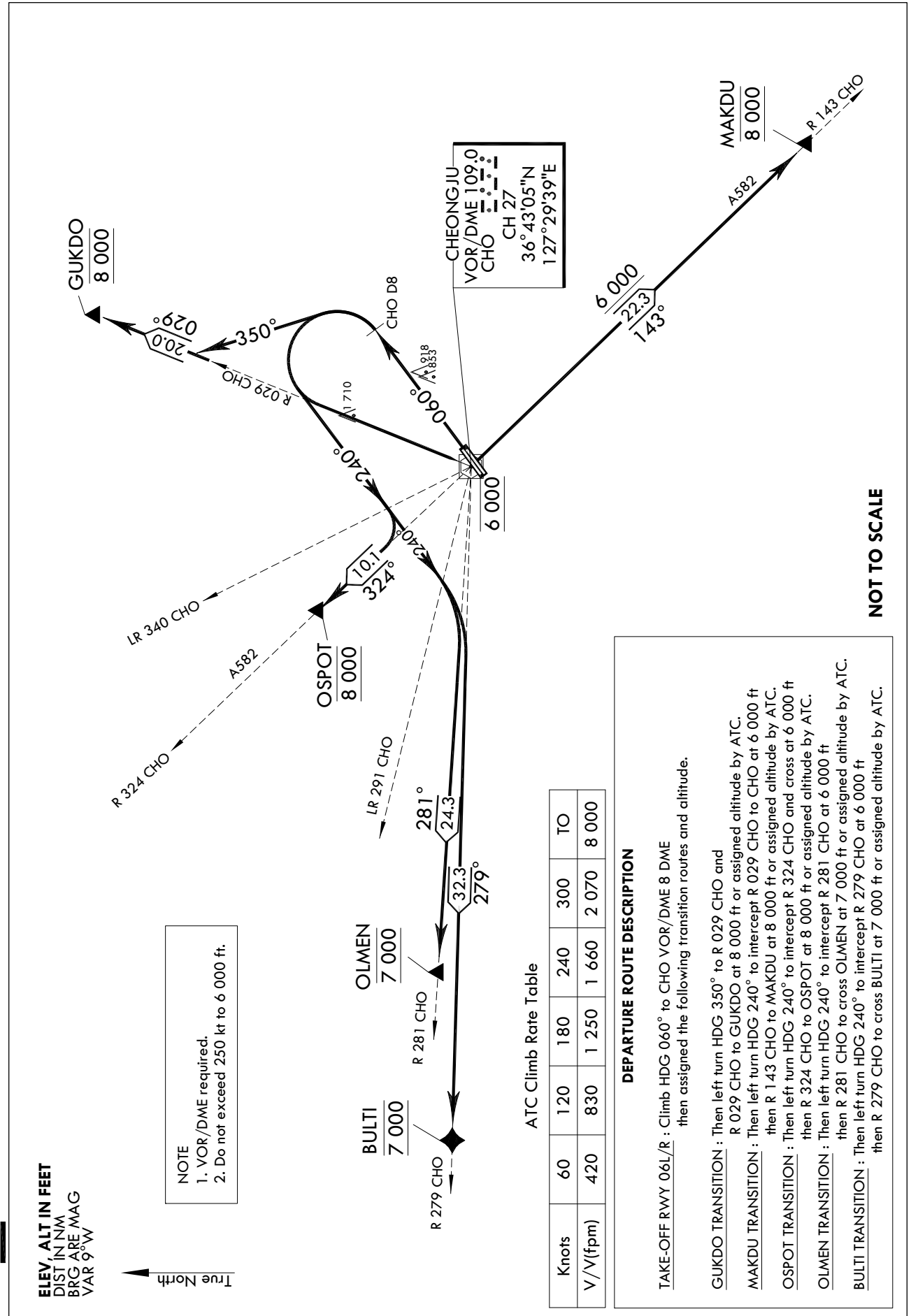
STANDARD DEPARTURE CHART
INSTRUMENT (SID) - ICAO

TRANSITION ALT 14 000
TRANSITION LVL FL 140

JUNGWON DEP 129.65 239.4
CHEONGJU TWR 118.7 126.2

CHEONGJU/Cheongju INTL(RKTU)
RWY 06L/R
CHEONGJU 4

Note : Departure under U.S. TERPS.



Change : Information of MAG VAR(8° W → 9° W).

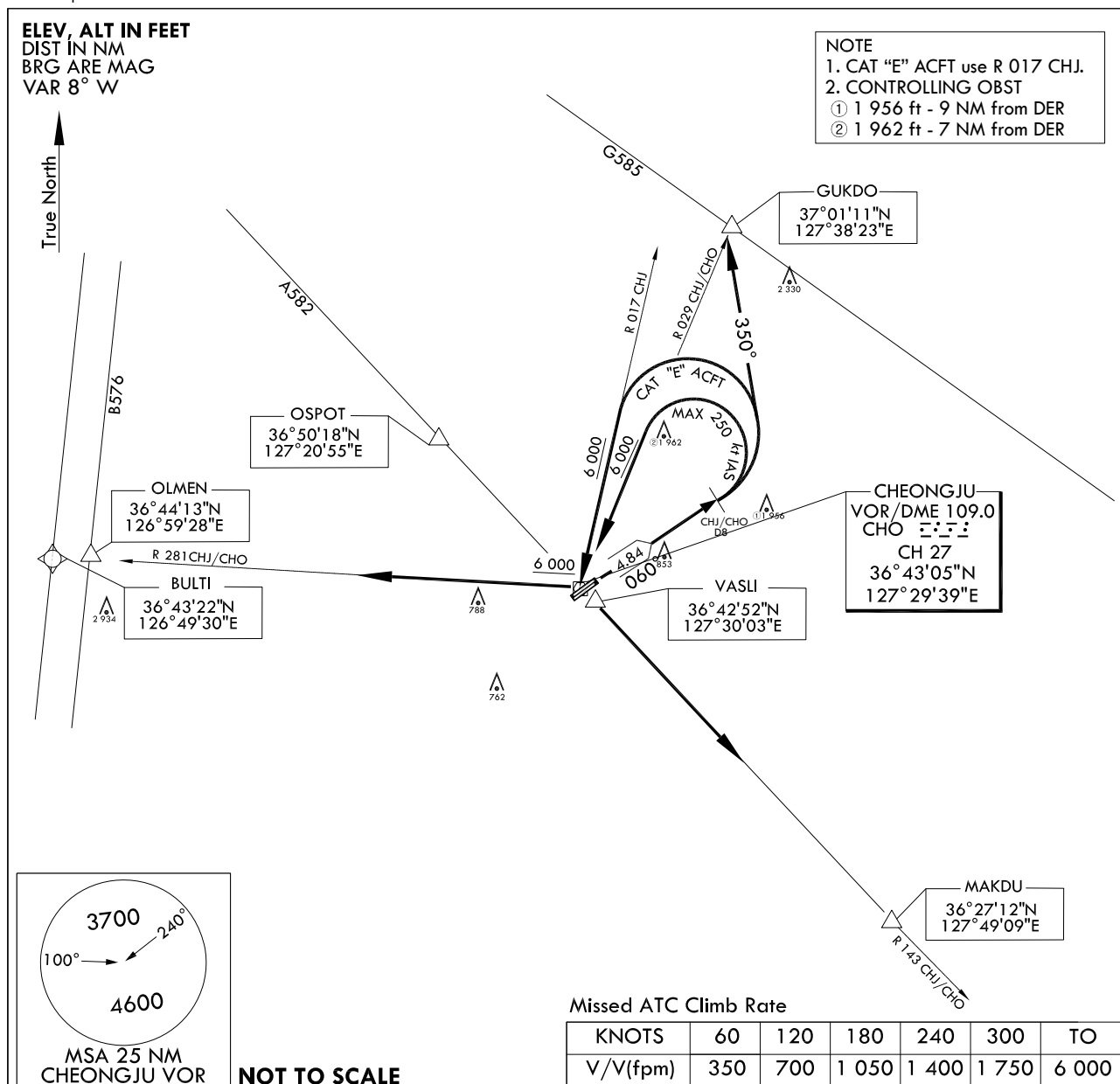
INTENTIONALLY

LEFT

BLANK

STANDARD DEPARTURE CHART
INSTRUMENT (SID) - ICAOTRANSITION ALT 14 000
TRANSITION LVL FL 140JUNGWON DEP 129.65 239.4
CHEONGJU TWR 118.7 126.2CHEONGJU/Cheongju INTL(RKTU)
RWY 06L/R
CHEONGJU 7

Note : Departure under U.S TERPS.



DEPARTURE PROCEDURE DESCRIPTION

CHEONGJU 7 DEPARTURE

RWY 06L/R : Climb HDG 060° to CHJ/CHO 8 DME, then left turn thence.....

- GUKDO transition** : Turn left HDG 350° for interception R 029 CHJ/CHO, then track outbound R 029 CHJ/CHO to GUKDO maintain 8 000 ft or assigned altitude by ATC.
- MAKDU transition** : Turn left for interception R 017 CHJ/R 029 CHO to CHJ/CHO and at or above 6 000 ft, then track outbound R 143 CHJ/CHO to MAKDU maintain 8 000 ft or assigned altitude by ATC.
- OLMEN/BULTI transition** : Turn left for interception R 017 CHJ/R 029 CHO to CHJ/CHO and at or above 6 000 ft, then track outbound R 281 CHJ/CHO to OLMEN/BULTI maintain 7 000 ft or assigned altitude by ATC.

Change : Page control.

INTENTIONALLY

LEFT

BLANK

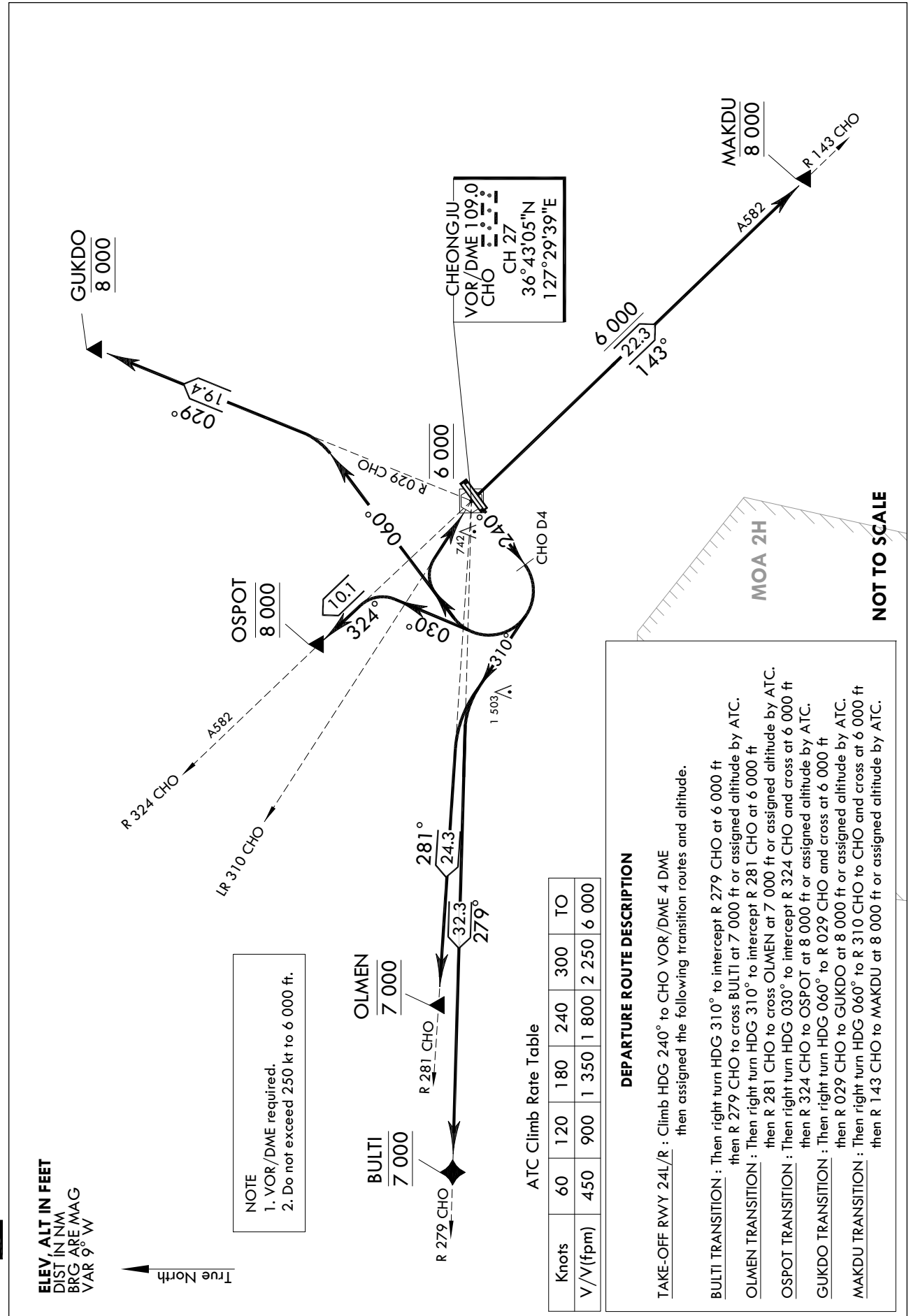
STANDARD DEPARTURE CHART
INSTRUMENT (SID) - ICAO

TRANSITION ALT 14 000
TRANSITION LVL FL 140

JUNGWON DEP 129.65 239.4
CHEONGJU TWR 118.7 126.2

CHEONGJU/Cheongju INTL(RKTU)
RWY 24L/R
CHEONGJU 5

Note : Departure under U.S. TERPS.



Change : Information of MAG VAR(8° W → 9° W).

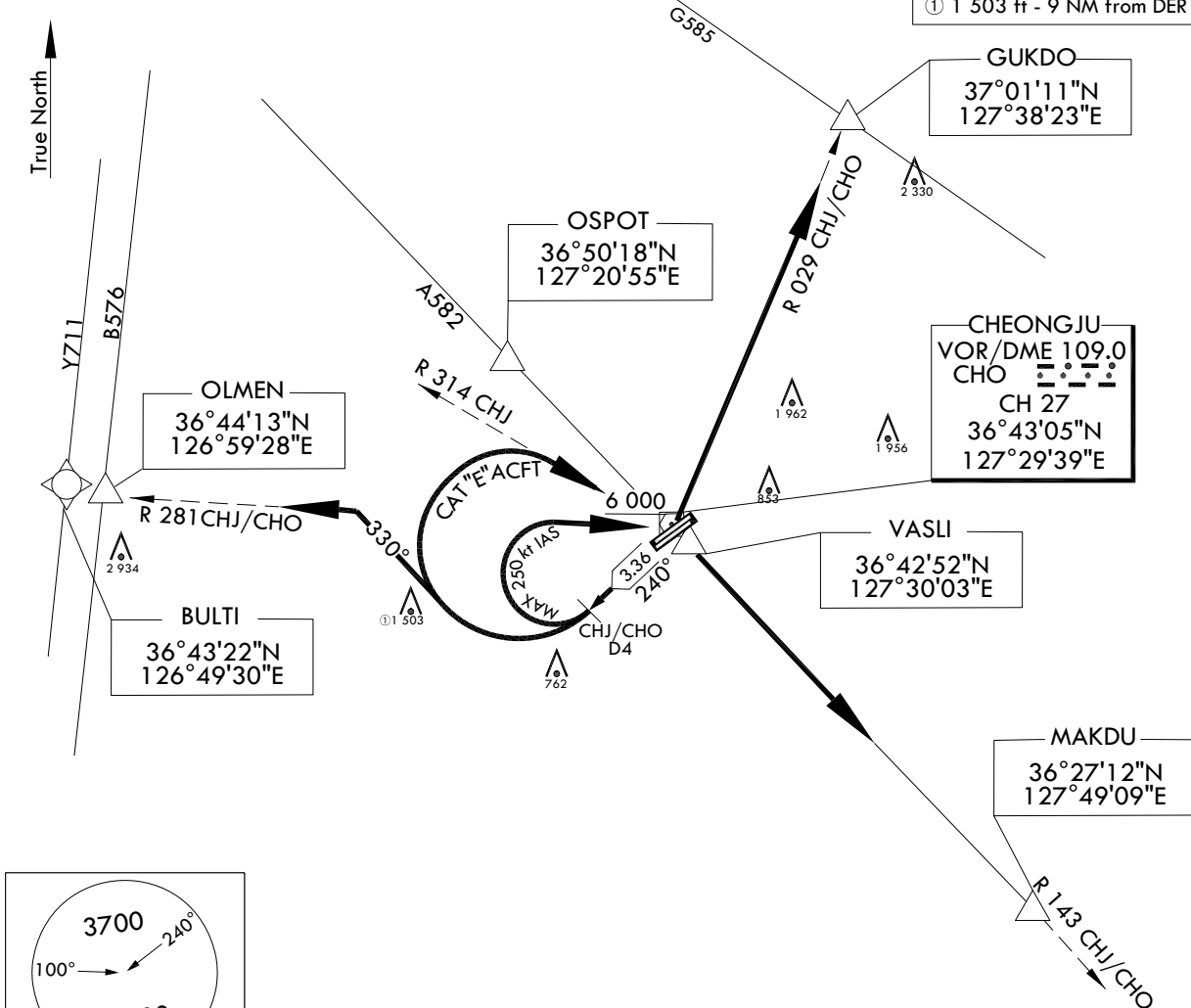
INTENTIONALLY

LEFT

BLANK

STANDARD DEPARTURE CHART
INSTRUMENT (SID) - ICAOTRANSITION ALT 14 000
TRANSITION LVL FL 140JUNGWON DEP 129.65 239.4
CHEONGJU TWR 118.7 126.2CHEONGJU/Cheongju INTL(RKTU)
RWY 24L/R
CHEONGJU 8

Note : Departure under U.S TERPS.

ELEV, ALT IN FEET
DIST IN NM
BRG ARE MAG
VAR 8° W

NOT TO SCALE

Missed ATC Climb Rate

KNOTS	60	120	180	240	300	TO
V/V(fpm)	450	900	1 350	1 800	2 250	6 000

DEPARTURE PROCEDURE DESCRIPTION

CHEONGJU 8 DEPARTURE

RWY 24L/R : Climb HDG 240° to CHJ/CHO 4 DME, then right turn for the following routes.

- GUKDO transition** : Turn right for interception R 341 CHJ/R 281 CHO to CHJ/CHO and at or above 6 000 ft, then track outbound R 029 CHJ/CHO to GUKDO maintain 8 000 ft or assigned altitude by ATC.
- MAKDU transition** : Turn right for interception R 314 CHJ/R 281 CHO to CHJ/CHO and at or above 6 000 ft, then track outbound R 143 CHJ/CHO to MAKDU maintain 8 000 ft or assigned altitude by ATC.
- OLMEN/BULTI transition** : Turn right HDG 330° for interception R 281 CHJ/CHO, then track outbound R 281 CHJ/CHO to OLMEN/BULTI maintain 8 000 ft or assigned altitude by ATC.

Change : Page control.

OFFICE OF CIVIL AVIATION

AIRAC AIP AMDT 3/25
Effective : 1600UTC 16 APR 2025

INTENTIONALLY

LEFT

BLANK

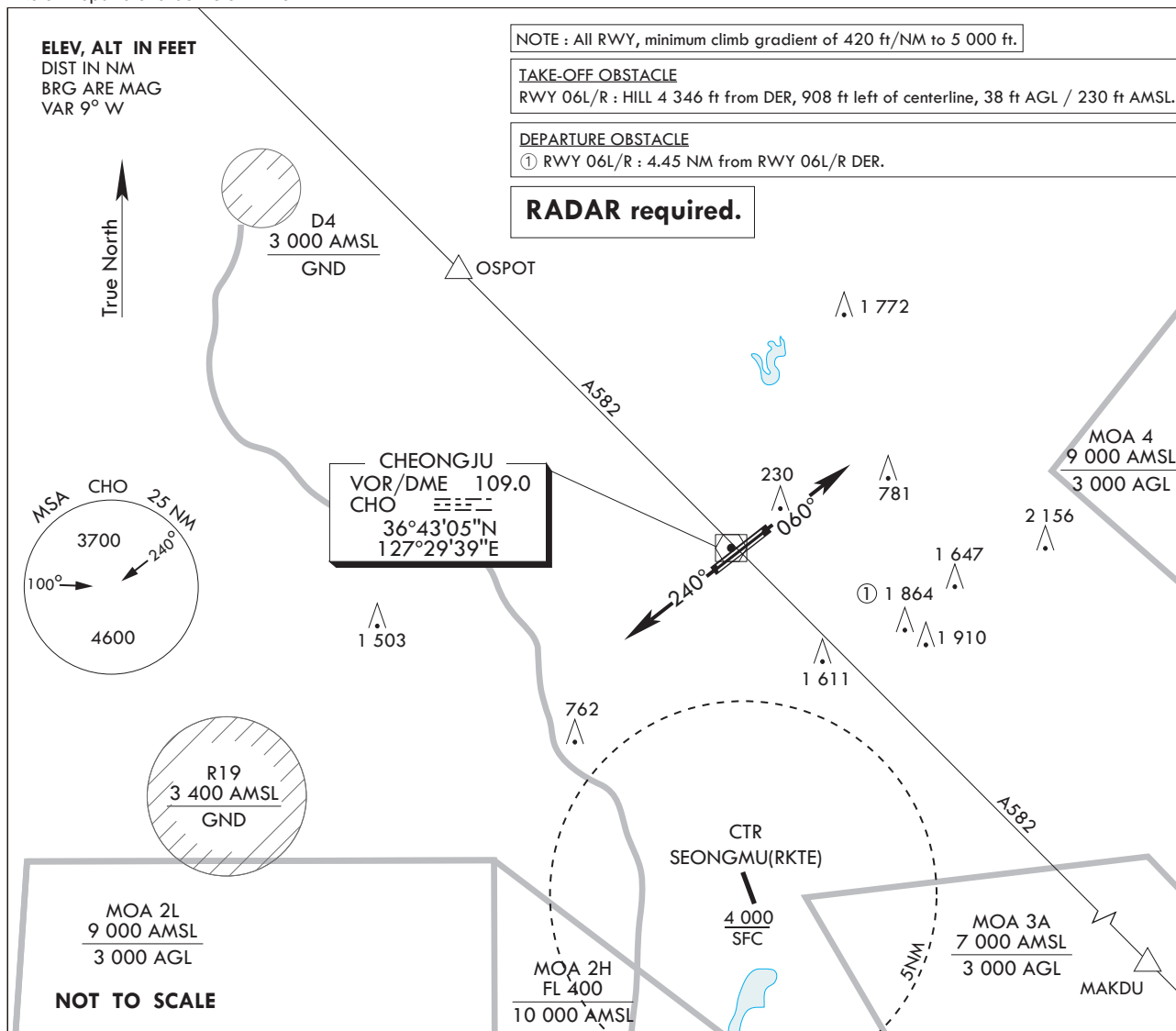
STANDARD DEPARTURE CHART -
INSTRUMENT (SID)

TRANSITION ALT 14 000
TRANSITION LVL FL 140

JUNGWON DEP 129.65 292.9
CHEONGJU TWR 118.7 249.6
126.2 236.6

CHEONGJU/Cheongju INTL
RWY 06/24
CHEONGJU 1D

Note : Departure under U.S. TERPS.



DEPARTURE PROCEDURE DESCRIPTION

NOTE : ALL RWY, Minimum climb gradient of 420 ft/NM to 5 000 ft.

TAKE-OFF RWY 06R/L : Climb HDG 060°, thence.....

TAKE-OFF RWY 24R/L : Climb HDG 240°, thence.....

.....Expect radar vectors to intercept filed Enroute fix or Navaid.
Maintain 6 000 ft or assigned altitude(flight level).
Expect filed altitude/flight level within 10 minutes after departure.

LOST COMMUNICATIONS : If radio contact is not established with departure control
prior to reaching 5 000 ft, continue climbing and proceed filed route
and altitude.

Change : Information of MAG VAR(8° W → 9° W).

INTENTIONALLY

LEFT

BLANK